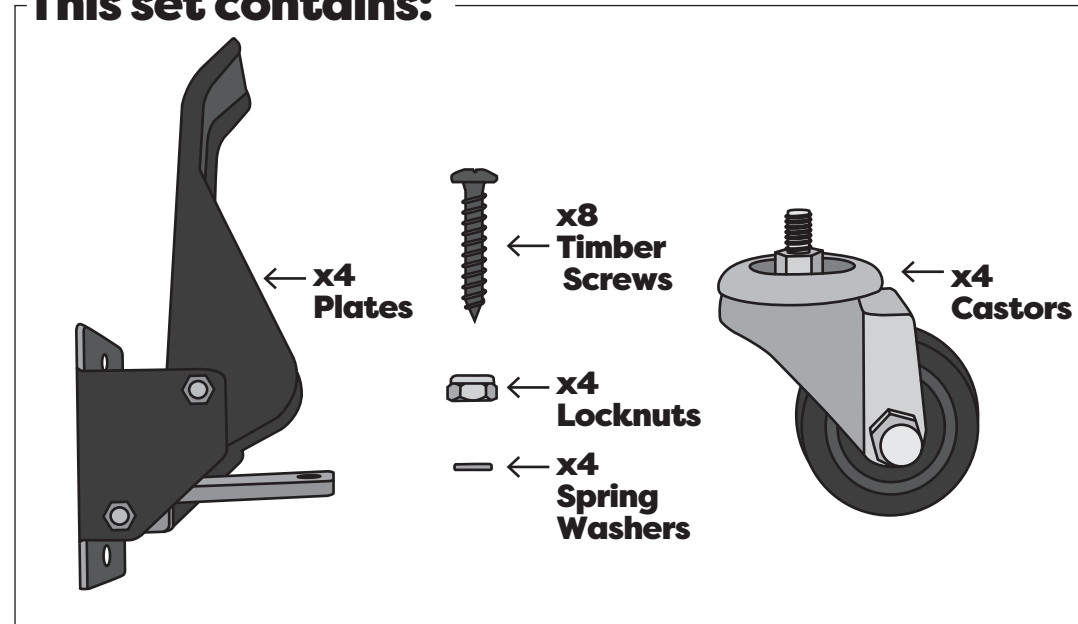


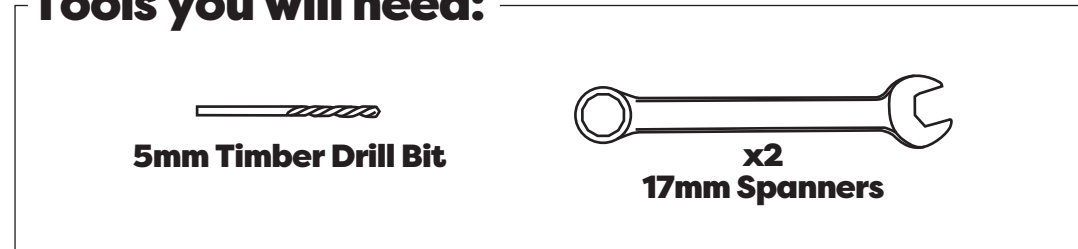
Workbench Castor Set

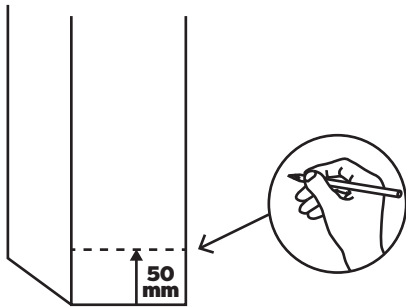
Installation Instructions

This set contains:

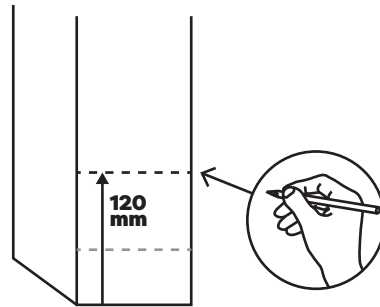


Tools you will need:

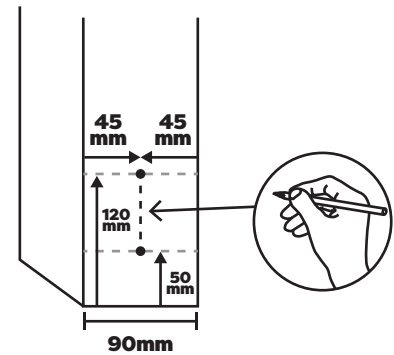


1

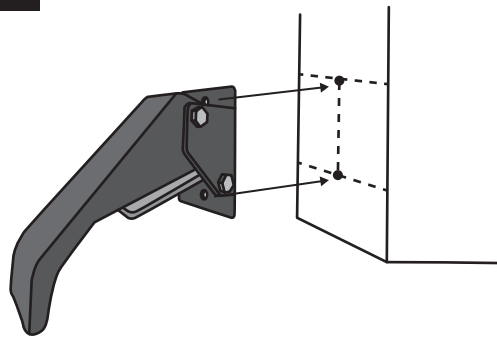
First find and draw a mark 50mm from the bottom of the table leg.

2

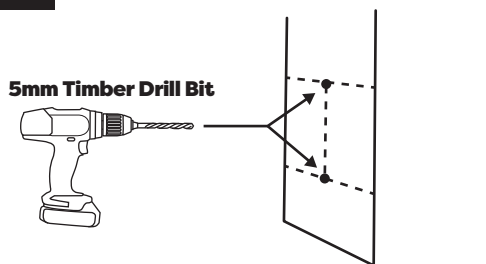
Then find and draw a mark 120mm from the bottom of the table leg.

3

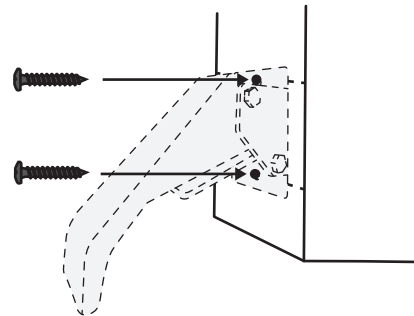
Find your centre point of both lines. For example if the width of the leg is 90mm wide, your centre is 45mm. Once you have found centre, mark both and connect the two lines.

4

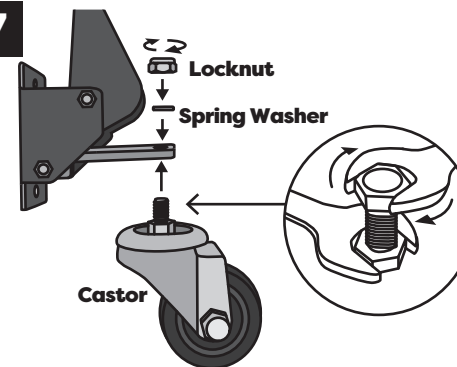
Double check using the plate as reference, but this should be your mounting points.

5

We recommend predrilling into timber legs, you can use a 5mm drill bit and a depth of 35mm is recommended.

6

Using the timber screws provided install the plate to the workbench leg.

7

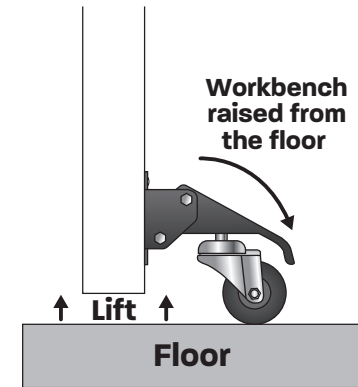
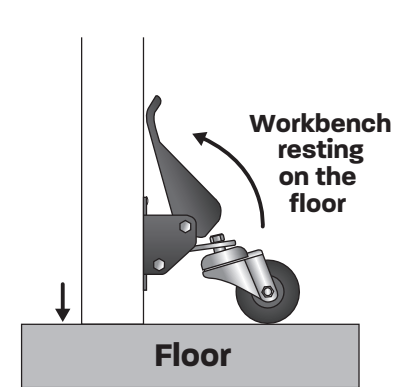
Once the plate is installed add the castor to the plate using the spring washer and the locknut provided. Two 17mm spanners work the best.

8

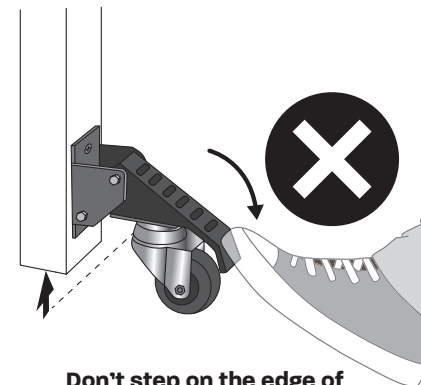
Repeat steps 1 to 7 for all legs.



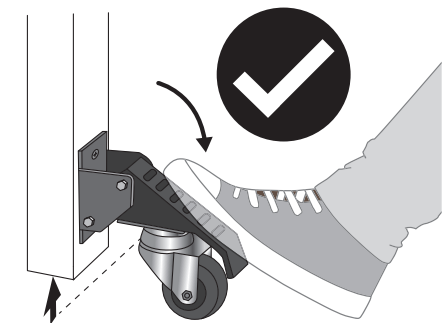
Scan QR code for installation video and installation template document.



Test each leg to ensure they properly engage.



Don't step on the edge of the pedal



Step on the middle of the pedal